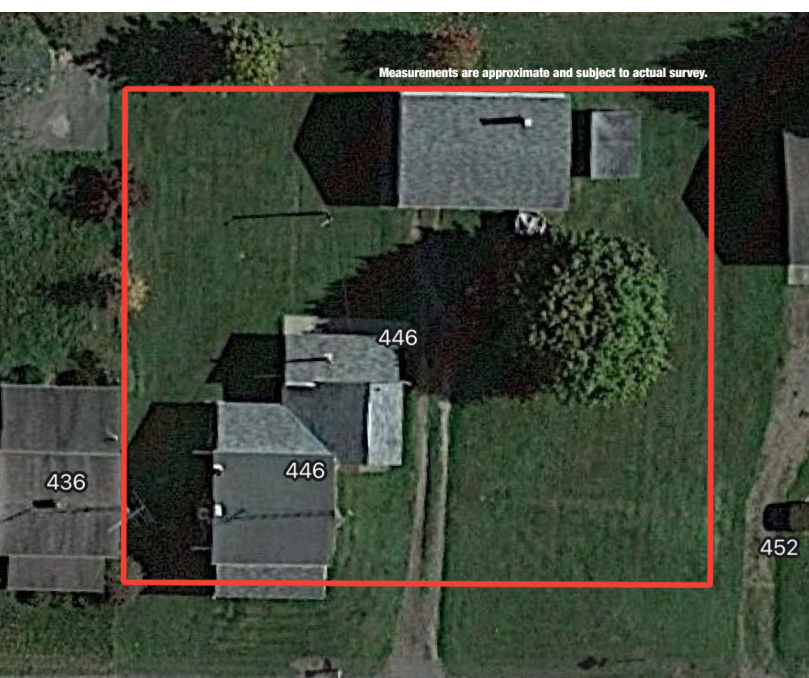


ABSOLUTE AUCTION

THURSDAY, MAY 9, 2024, 5:30 PM



REAL ESTATE



LIVE AUCTION WITH ONLINE BIDDING

REAL ESTATE

Three-bedroom home with one full and two half baths and three-bay garage situated on .39 acres with scenic backyard views in a very convenient location. Main level features a family room, dining room, kitchen, bonus room with half bath, laundry and storage rooms. Three bedrooms upstairs with one half bath. Partial basement with updated furnace with A/C and breaker electric. Supplement heat with wood burner and baseboard heaters. Nice three-bay garage with wood burner hook up, tool room, and attic storage. Backyard is bordered by ag fields with a great view overlooking the valley below. The seller has enjoyed this property for many years! Call today to get your questions answered, check it out!

AUCTIONEERS NOTE

Seller and family have owned this property since 1988. Seller has decided to downsize and move into assisted living.

TERMS ON REAL ESTATE

10% down auction day, balance due at closing. A 10% buyer's premium will be added to the highest bid to establish the purchase price. Any desired inspections must be made prior to bidding. All information contained herein was derived from sources believed to be correct. Information is believed to be accurate but not guaranteed.

AUCTION BY ORDER OF

Betty Speakman

THREE-BEDROOM, TWO-BATH HOME, THREE-BAY GARAGE

Paris Twp., Minerva LSD

446 PARIS AVE. NE,
PARIS, OH 44669



JOSEPH GLIATTA
AUCTIONEER/REALTOR®
330.771.4012
jgliatta@kikocompany.com

www.kikoauctions.com | 800.533.5456

Information is believed to be accurate but not guaranteed.
KIKO Auctioneers



MLS



Scan for auction details, including directions.

Absolute Auction.
All sells to the highest bidder on location.